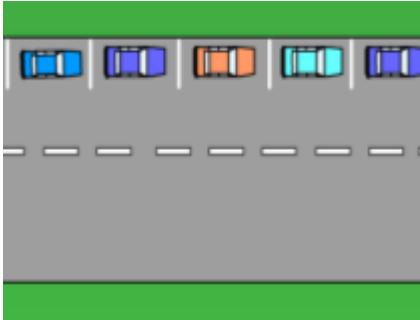


Parallel Parking

Parallel to roadside/ curb Difficult level, practice is required



- Keep the vehicle near the curbside so that driver-side door opening will not disturb moving traffic.
- Keep equal distance front and rear sides of the vehicle so that the rear vehicle can be moved out easily.

Angle Parking

At 45° angle to the side/ curb Easy



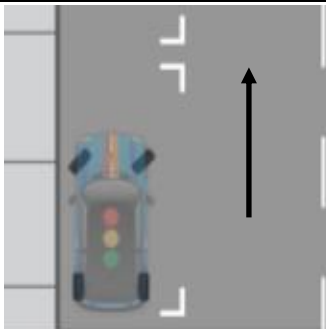
- Keep an equal distance on either side of the vehicle so the door can be opened without hitting other cars.
- Never park on markings made for indicating parking space.
- Never park in such a way that it obstructs pedestrians on the footpath.

Perpendicular Parking

At 90° angle to roadside/ curb Easy, little experience is required

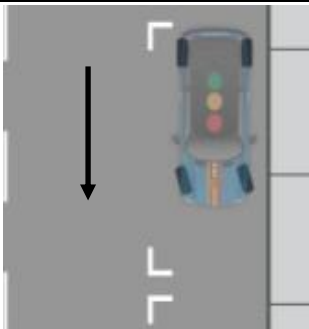


Uphill Parking: Turn the front wheel right side fully



When headed uphill at a curb, turn the front wheels away from the curb and let your vehicle roll backward slowly until the rear part of the front wheel rests against the curb using it as a block.

Downhill Parking: Turn the front wheel left fully



When you stop your car headed downhill, turn your front wheels toward the curb. Let your vehicle roll slowly until the front tire rests against the curb using it as a block.

SIGNBOARDS



Parking is allowed



Parking for Handicapped



No Parking

PARKING RULES

- Never Park on the part of a road where traffic is flowing.
- Never Park at a place where you do not have a clear view for at least 50 meters in both directions.
- Never Park where you will block a vehicle already parked or where you will block a sidewalk, crosswalk, pedestrian crossing, or road entrance.
- Never Park close to a public entrance to a hotel, theatre, or public hall when it is open to the public.
- Never Park near an intersection or a roundabout.
- Look around and make sure before opening the door of your parked vehicle. Close the door as soon as you can.
- Part your vehicle on the left side in the direction of the traffic.
- Pull the handbrake.
- Never leave the children in the vehicle after parking.



Check the rear before opening the door on the traffic side



Never Park on a footpath



Never Park in front of the entrance or hydrant or reserved for handicapped



Wrong Parking (occupied 2 spaces)

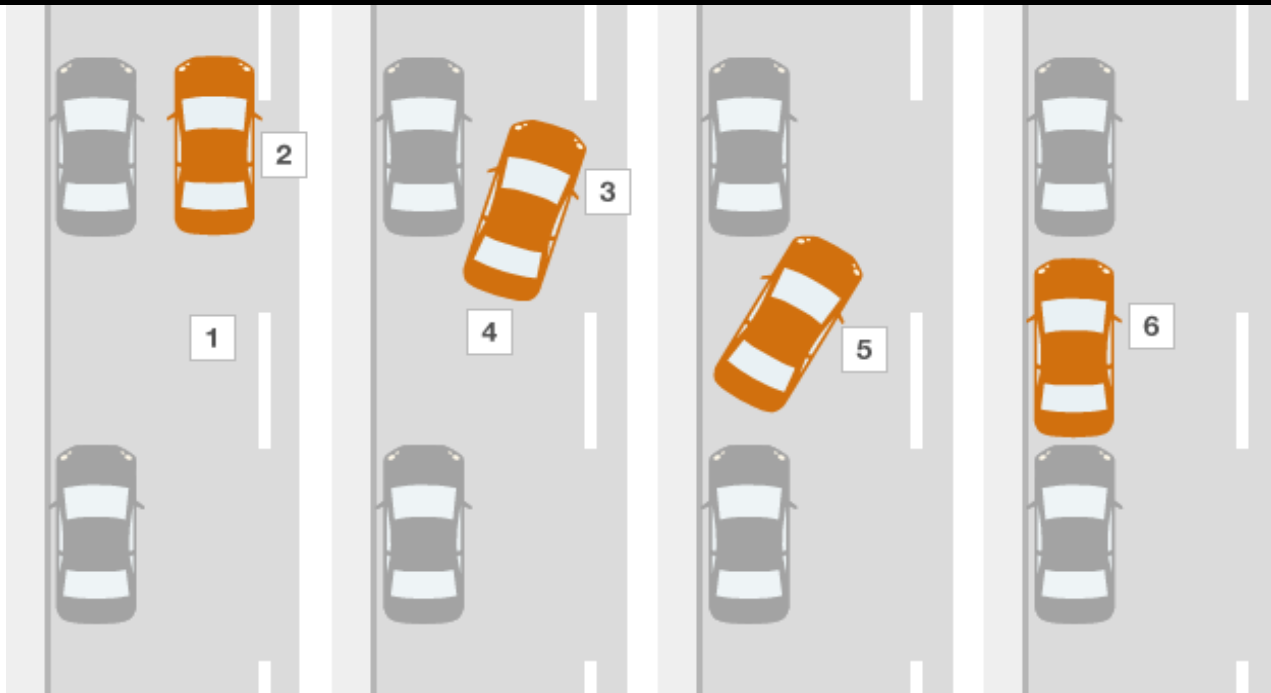


Wrong Parking (occupied 3 spaces)



Wrong Parking (occupied 2 spaces)

METHOD OF PARALLEL PARKING



- Pull up alongside the gap you want to park in and check it's big enough - allow a minimum of 2ft at both ends
- Move slowly forward until the back of your car is alongside the back of the car in front of your space
- Turn the steering wheel to the left, just how far will depend on your car
- Move slowly backward - using the rear-view mirror to keep an eye on the car behind you and the nearside mirror to check the position of the curb
- When your car is close to the curb, your car should be clear of the one in front - turn the steering wheel to the right, to bring the front of your car close to the curb
- Straighten up the wheels by turning the steering wheel to the left

YOUTUBE

How to fit your car between two cars (video on Parallel Parking)

<https://www.youtube.com/watch?v=XArUecNskh4>

https://www.youtube.com/watch?v=xckP_BvClrM

Must watch these videos to learn and practice – it's easy

WHY WE



700+ Customer Reviews on Google
Score is 4.7/5.0
https://bit.ly/REVIEW_AMC



IMS Lead Auditor Course
9001 + 14001 + 45001 (Combo)
<https://bit.ly/LAC-IMS-EL>



Legal Compliance

Mobile App – Compliance

QHSE SOFTWARE SOLUTION



Safety Permit

Mobile App – PTW



Quality Control

Mobile App - Quality

www.QHSEalert.com



Legal Library
Environment + Safety + Human Resource
https://bit.ly/Legal_Lib



Mobile Application
EHS Legal Library
https://bit.ly/LIB_app



WHAT CUSTOMER SPEAKS ABOUT US
IT IS NOT EDITABLE FEEDBACK ON GOOGLE
https://bit.ly/Review_LAC



Download EHS Publication
FREE Access
<https://bit.ly/ehs-tbt>

AKSHAR MANAGEMENT CONSULTANT

B-201, Darshnam Oxy Park,
Nr. Neelkamal Farm,
Vasna Bhayali Road,
Vadodara-390007,
Gujarat (INDIA)

+91-99099.79870
contact@aksharQHSE.in